

TEST REPORT

Applicant: Shenzhen Huafurui Technology Co., Ltd.
Address: Unit 1401 & 1402, 14/F, Jinqi Zhigu Mansion (No. 4 Building of Chongwen Garden), Crossing of the Liuxian Street and Tangling Road, Taoyuan Street, Nanshan District, Shenzhen, P.R. China

The following sample(s) was/were submitted and identified on behalf of the client as:

Product name: Smartwatch
Model: N1
Trade mark: CUBOT/HAFURY
Manufacturer: Shenzhen Huafurui Technology Co., Ltd.
Address: Unit 1401 & 1402, 14/F, Jinqi Zhigu Mansion (No. 4 Building of Chongwen Garden), Crossing of the Liuxian Street and Tangling Road, Taoyuan Street, Nanshan District, Shenzhen, P.R. China

Sample Received Date: Mar. 20, 2021
Testing Period: Mar. 20, 2021~ Apr. 20, 2021

Test Requirement:

As specified by client, to determine the Lead(Pb), Cadmium(Cd), Mercury(Hg), Hexavalent Chromium(Cr(VI)), Polybrominated Biphenyls(PBBs), Polybrominated, Diphenyl Ethers(PBDEs), Bis-(2-ethylhexyl) Phthalate (DEHP), Benzyl butyl Phthalate (BBP), Dibutyl Phthalate (DBP) and Diisobutyl Phthalate(DIBP) contents in the submitted sample in accordance with RoHS directive 2011/65/EU and the amendment directive (EU) 2015/863.

Conclusion:

Pass

Test Result(s): Please refer to the following page(s);

Test Method: Please refer to the following page(s);

Compiled by: Eason

Reviewed by: Lqzls

Approved by: Mark Liao

Date: 2021-04-21

Test Result(s):

1.Shell

Part No.	Part Description	Test Items	XRF Screening Result(mg/kg)	Chemical Test Result(mg/kg)	Conclusion
1	Black plastic shell	Pb	BL	/	Pass
		Cd	BL	/	
		Hg	BL	/	
		Cr(Cr(VI))	BL	/	
		Br(PBBs&PBDEs)	BL	/	
		DIBP	/	N.D.	
		DEHP	/	N.D.	
		BBP	/	N.D.	
		DBP	/	N.D.	
2	Black plastic button	Pb	BL	/	Pass
		Cd	BL	/	
		Hg	BL	/	
		Cr(Cr(VI))	BL	/	
		Br(PBBs&PBDEs)	BL	/	
		DIBP	/	N.D.	
		DEHP	/	N.D.	
		BBP	/	N.D.	
		DBP	/	N.D.	
3	Black plastic film	Pb	BL	/	Pass
		Cd	BL	/	
		Hg	BL	/	
		Cr(Cr(VI))	BL	/	
		Br(PBBs&PBDEs)	BL	/	
		DIBP	/	N.D.	
		DEHP	/	N.D.	
		BBP	/	N.D.	
		DBP	/	N.D.	

4	Magnet	Pb	BL	/	Pass
		Cd	BL	/	
		Hg	BL	/	
		Cr(Cr(VI))	BL	/	
		Br(PBBs&PBDEs)	/	/	
		DIBP	/	/	
		DEHP	/	/	
		BBP	/	/	
		DBP	/	/	
5	Golden metal pin	Pb	BL	/	Pass
		Cd	BL	/	
		Hg	BL	/	
		Cr(Cr(VI))	BL	/	
		Br(PBBs&PBDEs)	/	/	
		DIBP	/	/	
		DEHP	/	/	
		BBP	/	/	
		DBP	/	/	
6	Black foam	Pb	BL	/	Pass
		Cd	BL	/	
		Hg	BL	/	
		Cr(Cr(VI))	BL	/	
		Br(PBBs&PBDEs)	BL	/	
		DIBP	/	N.D.	
		DEHP	/	N.D.	
		BBP	/	N.D.	
		DBP	/	N.D.	
7	Black FPC	Pb	BL	/	Pass
		Cd	BL	/	
		Hg	BL	/	
		Cr(Cr(VI))	BL	/	
		Br(PBBs&PBDEs)	BL	/	
		DIBP	/	N.D.	
		DEHP	/	N.D.	
		BBP	/	N.D.	
		DBP	/	N.D.	

8	Transparent plastic	Pb	BL	/	Pass
		Cd	BL	/	
		Hg	BL	/	
		Cr(Cr(VI))	BL	/	
		Br(PBBs&PBDEs)	BL	/	
		DIBP	/	N.D.	
		DEHP	/	N.D.	
		BBP	/	N.D.	
		DBP	/	N.D.	
9	Black metal shell	Pb	BL	/	Pass
		Cd	BL	/	
		Hg	BL	/	
		Cr(Cr(VI))	IN	N.D.	
		Br(PBBs&PBDEs)	/	/	
		DIBP	/	/	
		DEHP	/	/	
		BBP	/	/	
		DBP	/	/	
10	Black double-Sided adhesive	Pb	BL	/	Pass
		Cd	BL	/	
		Hg	BL	/	
		Cr(Cr(VI))	BL	/	
		Br(PBBs&PBDEs)	BL	/	
		DIBP	/	N.D.	
		DEHP	/	N.D.	
		BBP	/	N.D.	
		DBP	/	N.D.	
11	Black metal screw 1	Pb	BL	/	Pass
		Cd	BL	/	
		Hg	BL	/	
		Cr(Cr(VI))	IN	N.D.	
		Br(PBBs&PBDEs)	/	/	
		DIBP	/	/	
		DEHP	/	/	
		BBP	/	/	
		DBP	/	/	

12	Black metal screw 2	Pb	BL	/	Pass
		Cd	BL	/	
		Hg	BL	/	
		Cr(Cr(VI))	IN	N.D.	
		Br(PBBs&PBDEs)	/	/	
		DIBP	/	/	
		DEHP	/	/	
		BBP	/	/	
DBP	/	/			

2. Band

13	Black rubber	Pb	BL	/	Pass
		Cd	BL	/	
		Hg	BL	/	
		Cr(Cr(VI))	BL	/	
		Br(PBBs&PBDEs)	BL	/	
		DIBP	/	N.D.	
		DEHP	/	N.D.	
		BBP	/	N.D.	
DBP	/	N.D.			
14	Black rubber sleeve	Pb	BL	/	Pass
		Cd	BL	/	
		Hg	BL	/	
		Cr(Cr(VI))	BL	/	
		Br(PBBs&PBDEs)	BL	/	
		DIBP	/	N.D.	
		DEHP	/	N.D.	
		BBP	/	N.D.	
DBP	/	N.D.			
15	Silvery metal rod	Pb	BL	/	Pass
		Cd	BL	/	
		Hg	BL	/	
		Cr(Cr(VI))	IN	N.D.	
		Br(PBBs&PBDEs)	/	/	
		DIBP	/	/	
		DEHP	/	/	
		BBP	/	/	
DBP	/	/			

16	Metal spring	Pb	BL	/	Pass
		Cd	BL	/	
		Hg	BL	/	
		Cr(Cr(VI))	IN	N.D.	
		Br(PBBs&PBDEs)	/	/	
		DIBP	/	/	
		DEHP	/	/	
		BBP	/	/	
		DBP	/	/	
17	Silvery metal buckle	Pb	BL	/	Pass
		Cd	BL	/	
		Hg	BL	/	
		Cr(Cr(VI))	IN	N.D.	
		Br(PBBs&PBDEs)	/	/	
		DIBP	/	/	
		DEHP	/	/	
		BBP	/	/	
		DBP	/	/	
18	Silvery metal rod	Pb	BL	/	Pass
		Cd	BL	/	
		Hg	BL	/	
		Cr(Cr(VI))	IN	N.D.	
		Br(PBBs&PBDEs)	/	/	
		DIBP	/	/	
		DEHP	/	/	
		BBP	/	/	
		DBP	/	/	
19	Silvery metallic film	Pb	BL	/	Pass
		Cd	BL	/	
		Hg	BL	/	
		Cr(Cr(VI))	IN	N.D.	
		Br(PBBs&PBDEs)	/	/	
		DIBP	/	/	
		DEHP	/	/	
		BBP	/	/	
		DBP	/	/	

3. Screen

20	Glass screen	Pb	BL	/	Pass
		Cd	BL	/	
		Hg	BL	/	
		Cr(Cr(VI))	BL	/	
		Br(PBBs&PBDEs)	BL	/	
		DIBP	/	N.D.	
		DEHP	/	N.D.	
		BBP	/	N.D.	
21	Silvery metal plate	Pb	BL	/	Pass
		Cd	BL	/	
		Hg	BL	/	
		Cr(Cr(VI))	IN	N.D.	
		Br(PBBs&PBDEs)	/	/	
		DIBP	/	/	
		DEHP	/	/	
		BBP	/	/	
22	White plastic frame	Pb	BL	/	Pass
		Cd	BL	/	
		Hg	BL	/	
		Cr(Cr(VI))	BL	/	
		Br(PBBs&PBDEs)	BL	/	
		DIBP	/	N.D.	
		DEHP	/	N.D.	
		BBP	/	N.D.	
23	White plastic sheet	Pb	BL	/	Pass
		Cd	BL	/	
		Hg	BL	/	
		Cr(Cr(VI))	BL	/	
		Br(PBBs&PBDEs)	BL	/	
		DIBP	/	N.D.	
		DEHP	/	N.D.	
		BBP	/	N.D.	
DBP	/	N.D.			

24	Transparent plastic board	Pb	BL	/	Pass
		Cd	BL	/	
		Hg	BL	/	
		Cr(Cr(VI))	BL	/	
		Br(PBBs&PBDEs)	BL	/	
		DIBP	/	N.D.	
		DEHP	/	N.D.	
		BBP	/	N.D.	
		DBP	/	N.D.	
25	Frosted white plastic	Pb	BL	/	Pass
		Cd	BL	/	
		Hg	BL	/	
		Cr(Cr(VI))	BL	/	
		Br(PBBs&PBDEs)	BL	/	
		DIBP	/	N.D.	
		DEHP	/	N.D.	
		BBP	/	N.D.	
		DBP	/	N.D.	
26	Silvery plastic sheet	Pb	BL	/	Pass
		Cd	BL	/	
		Hg	BL	/	
		Cr(Cr(VI))	BL	/	
		Br(PBBs&PBDEs)	BL	/	
		DIBP	/	N.D.	
		DEHP	/	N.D.	
		BBP	/	N.D.	
		DBP	/	N.D.	
27	Black double-Sided adhesive	Pb	BL	/	Pass
		Cd	BL	/	
		Hg	BL	/	
		Cr(Cr(VI))	BL	/	
		Br(PBBs&PBDEs)	BL	/	
		DIBP	/	N.D.	
		DEHP	/	N.D.	
		BBP	/	N.D.	
		DBP	/	N.D.	

28	LED	Pb	BL	/	Pass
		Cd	BL	/	
		Hg	BL	/	
		Cr(Cr(VI))	BL	/	
		Br(PBBs&PBDEs)	BL	/	
		DIBP	/	N.D.	
		DEHP	/	N.D.	
		BBP	/	N.D.	
		DBP	/	N.D.	
29	FPC	Pb	BL	/	Pass
		Cd	BL	/	
		Hg	BL	/	
		Cr(Cr(VI))	IN	N.D.	
		Br(PBBs&PBDEs)	BL	/	
		DIBP	/	N.D.	
		DEHP	/	N.D.	
		BBP	/	N.D.	
		DBP	/	N.D.	
30	Yellow adhesive tape	Pb	BL	/	Pass
		Cd	BL	/	
		Hg	BL	/	
		Cr(Cr(VI))	BL	/	
		Br(PBBs&PBDEs)	BL	/	
		DIBP	/	N.D.	
		DEHP	/	N.D.	
		BBP	/	N.D.	
		DBP	/	N.D.	
31	IC	Pb	BL	/	Pass
		Cd	BL	/	
		Hg	BL	/	
		Cr(Cr(VI))	BL	/	
		Br(PBBs&PBDEs)	BL	/	
		DIBP	/	N.D.	
		DEHP	/	N.D.	
		BBP	/	N.D.	
		DBP	/	N.D.	

32	White PCB	Pb	BL	/	Pass
		Cd	BL	/	
		Hg	BL	/	
		Cr(Cr(VI))	BL	/	
		Br(PBBs&PBDEs)	BL	/	
		DIBP	/	N.D.	
		DEHP	/	N.D.	
		BBP	/	N.D.	
		DBP	/	N.D.	
33	SMD capacitor	Pb	BL	/	Pass
		Cd	BL	/	
		Hg	BL	/	
		Cr(Cr(VI))	BL	/	
		Br(PBBs&PBDEs)	BL	/	
		DIBP	/	N.D.	
		DEHP	/	N.D.	
		BBP	/	N.D.	
		DBP	/	N.D.	
34	Metal back plate	Pb	BL	/	Pass
		Cd	BL	/	
		Hg	BL	/	
		Cr(Cr(VI))	IN	N.D.	
		Br(PBBs&PBDEs)	/	/	
		DIBP	/	/	
		DEHP	/	/	
		BBP	/	/	
		DBP	/	/	
35	Black plastic of black interface	Pb	BL	/	Pass
		Cd	BL	/	
		Hg	BL	/	
		Cr(Cr(VI))	BL	/	
		Br(PBBs&PBDEs)	BL	/	
		DIBP	/	N.D.	
		DEHP	/	N.D.	
		BBP	/	N.D.	
		DBP	/	N.D.	

36	Metal contact of black interface	Pb	BL	/	Pass
		Cd	BL	/	
		Hg	BL	/	
		Cr(Cr(VI))	BL	/	
		Br(PBBs&PBDEs)	/	/	
		DIBP	/	/	
		DEHP	/	/	
		BBP	/	/	
		DBP	/	/	
37	Black tape	Pb	BL	/	Pass
		Cd	BL	/	
		Hg	BL	/	
		Cr(Cr(VI))	BL	/	
		Br(PBBs&PBDEs)	BL	/	
		DIBP	/	N.D.	
		DEHP	/	N.D.	
		BBP	/	N.D.	
		DBP	/	N.D.	
38	Silver grey tape	Pb	BL	/	Pass
		Cd	BL	/	
		Hg	BL	/	
		Cr(Cr(VI))	BL	/	
		Br(PBBs&PBDEs)	BL	/	
		DIBP	/	N.D.	
		DEHP	/	N.D.	
		BBP	/	N.D.	
		DBP	/	N.D.	
39	Black foam	Pb	BL	/	Pass
		Cd	BL	/	
		Hg	BL	/	
		Cr(Cr(VI))	BL	/	
		Br(PBBs&PBDEs)	BL	/	
		DIBP	/	N.D.	
		DEHP	/	N.D.	
		BBP	/	N.D.	
		DBP	/	N.D.	

4.PCBA

40	Blue PCB	Pb	BL	/	Pass
		Cd	BL	/	
		Hg	BL	/	
		Cr(Cr(VI))	BL	/	
		Br(PBBs&PBDEs)	IN	N.D.	
		DIBP	/	N.D.	
		DEHP	/	N.D.	
		BBP	/	N.D.	
DBP	/	N.D.			
41	Copper metal contact plate	Pb	BL	/	Pass
		Cd	BL	/	
		Hg	BL	/	
		Cr(Cr(VI))	BL	/	
		Br(PBBs&PBDEs)	/	/	
		DIBP	/	/	
		DEHP	/	/	
		BBP	/	/	
DBP	/	/			
42	Grey plastic of black strip	Pb	BL	/	Pass
		Cd	BL	/	
		Hg	BL	/	
		Cr(Cr(VI))	BL	/	
		Br(PBBs&PBDEs)	BL	/	
		DIBP	/	N.D.	
		DEHP	/	N.D.	
		BBP	/	N.D.	
DBP	/	N.D.			
43	Black plastic of black strip	Pb	BL	/	Pass
		Cd	BL	/	
		Hg	BL	/	
		Cr(Cr(VI))	BL	/	
		Br(PBBs&PBDEs)	BL	/	
		DIBP	/	N.D.	
		DEHP	/	N.D.	
		BBP	/	N.D.	
DBP	/	N.D.			

44	Metal pin of black strip	Pb	BL	/	Pass
		Cd	BL	/	
		Hg	BL	/	
		Cr(Cr(VI))	BL	/	
		Br(PBBs&PBDEs)	/	/	
		DIBP	/	/	
		DEHP	/	/	
		BBP	/	/	
		DBP	/	/	
45	Black interface	Pb	BL	/	Pass
		Cd	BL	/	
		Hg	BL	/	
		Cr(Cr(VI))	BL	/	
		Br(PBBs&PBDEs)	BL	/	
		DIBP	/	N.D.	
		DEHP	/	N.D.	
		BBP	/	N.D.	
		DBP	/	N.D.	
46	Metal pin	Pb	BL	/	Pass
		Cd	BL	/	
		Hg	BL	/	
		Cr(Cr(VI))	BL	/	
		Br(PBBs&PBDEs)	/	/	
		DIBP	/	/	
		DEHP	/	/	
		BBP	/	/	
		DBP	/	/	
47	Silvery metal shell of vibrating motor	Pb	BL	/	Pass
		Cd	BL	/	
		Hg	BL	/	
		Cr(Cr(VI))	BL	/	
		Br(PBBs&PBDEs)	/	/	
		DIBP	/	/	
		DEHP	/	/	
		BBP	/	/	
		DBP	/	/	

48	Black foam of vibrating motor	Pb	BL	/	Pass
		Cd	BL	/	
		Hg	BL	/	
		Cr(Cr(VI))	BL	/	
		Br(PBBs&PBDEs)	BL	/	
		DIBP	/	N.D.	
		DEHP	/	N.D.	
		BBP	/	N.D.	
		DBP	/	N.D.	
49	PCB of vibrating motor	Pb	BL	/	Pass
		Cd	BL	/	
		Hg	BL	/	
		Cr(Cr(VI))	BL	/	
		Br(PBBs&PBDEs)	IN	N.D.	
		DIBP	/	N.D.	
		DEHP	/	N.D.	
		BBP	/	N.D.	
		DBP	/	N.D.	
50	White plastic of vibrating motor	Pb	BL	/	Pass
		Cd	BL	/	
		Hg	BL	/	
		Cr(Cr(VI))	BL	/	
		Br(PBBs&PBDEs)	BL	/	
		DIBP	/	N.D.	
		DEHP	/	N.D.	
		BBP	/	N.D.	
		DBP	/	N.D.	
51	Silvery metal block of vibrating motor	Pb	BL	/	Pass
		Cd	BL	/	
		Hg	BL	/	
		Cr(Cr(VI))	BL	/	
		Br(PBBs&PBDEs)	/	/	
		DIBP	/	/	
		DEHP	/	/	
		BBP	/	/	
		DBP	/	/	

52	Cupreous coil of vibrating motor	Pb	BL	/	Pass
		Cd	BL	/	
		Hg	BL	/	
		Cr(Cr(VI))	BL	/	
		Br(PBBs&PBDEs)	/	/	
		DIBP	/	/	
		DEHP	/	/	
		BBP	/	/	
		DBP	/	/	
53	Cupreous nut of vibrating motor	Pb	BL	/	Pass
		Cd	BL	/	
		Hg	BL	/	
		Cr(Cr(VI))	BL	/	
		Br(PBBs&PBDEs)	/	/	
		DIBP	/	/	
		DEHP	/	/	
		BBP	/	/	
		DBP	/	/	
54	Magnet of vibrating motor	Pb	BL	/	Pass
		Cd	BL	/	
		Hg	BL	/	
		Cr(Cr(VI))	BL	/	
		Br(PBBs&PBDEs)	/	/	
		DIBP	/	/	
		DEHP	/	/	
		BBP	/	/	
		DBP	/	/	
55	Red wire jacket of vibrating motor	Pb	BL	/	Pass
		Cd	BL	/	
		Hg	BL	/	
		Cr(Cr(VI))	BL	/	
		Br(PBBs&PBDEs)	BL	/	
		DIBP	/	N.D.	
		DEHP	/	N.D.	
		BBP	/	N.D.	
		DBP	/	N.D.	

56	Black wire jacket of vibrating motor	Pb	BL	/	Pass
		Cd	BL	/	
		Hg	BL	/	
		Cr(Cr(VI))	BL	/	
		Br(PBBs&PBDEs)	BL	/	
		DIBP	/	N.D.	
		DEHP	/	N.D.	
		BBP	/	N.D.	
		DBP	/	N.D.	
57	Core of wire of vibrating motor	Pb	BL	/	Pass
		Cd	BL	/	
		Hg	BL	/	
		Cr(Cr(VI))	BL	/	
		Br(PBBs&PBDEs)	/	/	
		DIBP	/	/	
		DEHP	/	/	
		BBP	/	/	
		DBP	/	/	
58	Transparent colloid	Pb	BL	/	Pass
		Cd	BL	/	
		Hg	BL	/	
		Cr(Cr(VI))	BL	/	
		Br(PBBs&PBDEs)	BL	/	
		DIBP	/	N.D.	
		DEHP	/	N.D.	
		BBP	/	N.D.	
		DBP	/	N.D.	
59	Yellow FPC	Pb	BL	/	Pass
		Cd	BL	/	
		Hg	BL	/	
		Cr(Cr(VI))	IN	N.D.	
		Br(PBBs&PBDEs)	BL	/	
		DIBP	/	N.D.	
		DEHP	/	N.D.	
		BBP	/	N.D.	
		DBP	/	N.D.	

60	Metal shrapnel	Pb	BL	/	Pass
		Cd	BL	/	
		Hg	BL	/	
		Cr(Cr(VI))	IN	N.D.	
		Br(PBBs&PBDEs)	/	/	
		DIBP	/	/	
		DEHP	/	/	
		BBP	/	/	
		DBP	/	/	
61	Black tape	Pb	BL	/	Pass
		Cd	BL	/	
		Hg	BL	/	
		Cr(Cr(VI))	BL	/	
		Br(PBBs&PBDEs)	BL	/	
		DIBP	/	N.D.	
		DEHP	/	N.D.	
		BBP	/	N.D.	
		DBP	/	N.D.	
62	Black FPC	Pb	BL	/	Pass
		Cd	BL	/	
		Hg	BL	/	
		Cr(Cr(VI))	IN	N.D.	
		Br(PBBs&PBDEs)	BL	/	
		DIBP	/	N.D.	
		DEHP	/	N.D.	
		BBP	/	N.D.	
		DBP	/	N.D.	
63	Black electronic components	Pb	BL	/	Pass
		Cd	BL	/	
		Hg	BL	/	
		Cr(Cr(VI))	BL	/	
		Br(PBBs&PBDEs)	BL	/	
		DIBP	/	N.D.	
		DEHP	/	N.D.	
		BBP	/	N.D.	
		DBP	/	N.D.	

64	Black rubber sleeve	Pb	BL	/	Pass
		Cd	BL	/	
		Hg	BL	/	
		Cr(Cr(VI))	BL	/	
		Br(PBBs&PBDEs)	BL	/	
		DIBP	/	N.D.	
		DEHP	/	N.D.	
		BBP	/	N.D.	
		DBP	/	N.D.	
65	SMD inductor	Pb	BL	/	Pass
		Cd	BL	/	
		Hg	BL	/	
		Cr(Cr(VI))	BL	/	
		Br(PBBs&PBDEs)	/	/	
		DIBP	/	/	
		DEHP	/	/	
		BBP	/	/	
		DBP	/	/	
66	SMD capacitor	Pb	BL	/	Pass
		Cd	BL	/	
		Hg	BL	/	
		Cr(Cr(VI))	BL	/	
		Br(PBBs&PBDEs)	BL	/	
		DIBP	/	N.D.	
		DEHP	/	N.D.	
		BBP	/	N.D.	
		DBP	/	N.D.	
67	SMT LED lights	Pb	BL	/	Pass
		Cd	BL	/	
		Hg	BL	/	
		Cr(Cr(VI))	BL	/	
		Br(PBBs&PBDEs)	BL	/	
		DIBP	/	N.D.	
		DEHP	/	N.D.	
		BBP	/	N.D.	
		DBP	/	N.D.	

68	Metal back plate	Pb	BL	/	Pass
		Cd	BL	/	
		Hg	BL	/	
		Cr(Cr(VI))	IN	N.D.	
		Br(PBBs&PBDEs)	/	/	
		DIBP	/	/	
		DEHP	/	/	
		BBP	/	/	
		DBP	/	/	
69	Black foam	Pb	BL	/	Pass
		Cd	BL	/	
		Hg	BL	/	
		Cr(Cr(VI))	BL	/	
		Br(PBBs&PBDEs)	BL	/	
		DIBP	/	N.D.	
		DEHP	/	N.D.	
		BBP	/	N.D.	
		DBP	/	N.D.	
70	Chip 1	Pb	BL	/	Pass
		Cd	BL	/	
		Hg	BL	/	
		Cr(Cr(VI))	BL	/	
		Br(PBBs&PBDEs)	BL	/	
		DIBP	/	N.D.	
		DEHP	/	N.D.	
		BBP	/	N.D.	
		DBP	/	N.D.	
71	Chip 2	Pb	BL	/	Pass
		Cd	BL	/	
		Hg	BL	/	
		Cr(Cr(VI))	BL	/	
		Br(PBBs&PBDEs)	BL	/	
		DIBP	/	N.D.	
		DEHP	/	N.D.	
		BBP	/	N.D.	
		DBP	/	N.D.	

72	Chip 3	Pb	BL	/	Pass
		Cd	BL	/	
		Hg	BL	/	
		Cr(Cr(VI))	BL	/	
		Br(PBBs&PBDEs)	BL	/	
		DIBP	/	N.D.	
		DEHP	/	N.D.	
		BBP	/	N.D.	
		DBP	/	N.D.	
73	Chip 4	Pb	BL	/	Pass
		Cd	BL	/	
		Hg	BL	/	
		Cr(Cr(VI))	BL	/	
		Br(PBBs&PBDEs)	BL	/	
		DIBP	/	N.D.	
		DEHP	/	N.D.	
		BBP	/	N.D.	
		DBP	/	N.D.	
74	Crystal oscillator	Pb	BL	/	Pass
		Cd	BL	/	
		Hg	BL	/	
		Cr(Cr(VI))	BL	/	
		Br(PBBs&PBDEs)	BL	/	
		DIBP	/	N.D.	
		DEHP	/	N.D.	
		BBP	/	N.D.	
		DBP	/	N.D.	
75	SMD resistor	Pb	BL	/	Pass
		Cd	BL	/	
		Hg	BL	/	
		Cr(Cr(VI))	BL	/	
		Br(PBBs&PBDEs)	BL	/	
		DIBP	/	N.D.	
		DEHP	/	N.D.	
		BBP	/	N.D.	
		DBP	/	N.D.	

76	SMD capacitor	Pb	BL	/	Pass
		Cd	BL	/	
		Hg	BL	/	
		Cr(Cr(VI))	BL	/	
		Br(PBBs&PBDEs)	BL	/	
		DIBP	/	N.D.	
		DEHP	/	N.D.	
		BBP	/	N.D.	
		DBP	/	N.D.	
77	SMD diode	Pb	BL	/	Pass
		Cd	BL	/	
		Hg	BL	/	
		Cr(Cr(VI))	BL	/	
		Br(PBBs&PBDEs)	BL	/	
		DIBP	/	N.D.	
		DEHP	/	N.D.	
		BBP	/	N.D.	
		DBP	/	N.D.	
78	SMD inductor	Pb	BL	/	Pass
		Cd	BL	/	
		Hg	BL	/	
		Cr(Cr(VI))	BL	/	
		Br(PBBs&PBDEs)	/	/	
		DIBP	/	/	
		DEHP	/	/	
		BBP	/	/	
		DBP	/	/	
79	Solder	Pb	BL	/	Pass
		Cd	BL	/	
		Hg	BL	/	
		Cr(Cr(VI))	BL	/	
		Br(PBBs&PBDEs)	/	/	
		DIBP	/	/	
		DEHP	/	/	
		BBP	/	/	
		DBP	/	/	

5.Wire

80	Silvery metal shell of USB interface	Pb	BL	/	Pass
		Cd	BL	/	
		Hg	BL	/	
		Cr(Cr(VI))	BL	/	
		Br(PBBs&PBDEs)	/	/	
		DIBP	/	/	
		DEHP	/	/	
		BBP	/	/	
81	Metal sheet of USB interface	Pb	BL	/	Pass
		Cd	BL	/	
		Hg	BL	/	
		Cr(Cr(VI))	BL	/	
		Br(PBBs&PBDEs)	/	/	
		DIBP	/	/	
		DEHP	/	/	
		BBP	/	/	
82	White plastic of USB interface	Pb	BL	/	Pass
		Cd	BL	/	
		Hg	BL	/	
		Cr(Cr(VI))	BL	/	
		Br(PBBs&PBDEs)	BL	/	
		DIBP	/	N.D.	
		DEHP	/	N.D.	
		BBP	/	N.D.	
83	Black encapsulation of USB interface	Pb	BL	/	Pass
		Cd	BL	/	
		Hg	BL	/	
		Cr(Cr(VI))	BL	/	
		Br(PBBs&PBDEs)	BL	/	
		DIBP	/	N.D.	
		DEHP	/	N.D.	
		BBP	/	N.D.	
DBP	/	N.D.			

84	Black interface	Pb	BL	/	Pass
		Cd	BL	/	
		Hg	BL	/	
		Cr(Cr(VI))	BL	/	
		Br(PBBs&PBDEs)	BL	/	
		DIBP	/	N.D.	
		DEHP	/	N.D.	
		BBP	/	N.D.	
		DBP	/	N.D.	
85	Magnet	Pb	BL	/	Pass
		Cd	BL	/	
		Hg	BL	/	
		Cr(Cr(VI))	BL	/	
		Br(PBBs&PBDEs)	/	/	
		DIBP	/	/	
		DEHP	/	/	
		BBP	/	/	
		DBP	/	/	
86	Golden metal pin	Pb	BL	/	Pass
		Cd	BL	/	
		Hg	BL	/	
		Cr(Cr(VI))	BL	/	
		Br(PBBs&PBDEs)	/	/	
		DIBP	/	/	
		DEHP	/	/	
		BBP	/	/	
		DBP	/	/	
87	Black encapsulation	Pb	BL	/	Pass
		Cd	BL	/	
		Hg	BL	/	
		Cr(Cr(VI))	BL	/	
		Br(PBBs&PBDEs)	BL	/	
		DIBP	/	N.D.	
		DEHP	/	N.D.	
		BBP	/	N.D.	
		DBP	/	N.D.	

88	Black plastic wire jacket	Pb	BL	/	Pass
		Cd	BL	/	
		Hg	BL	/	
		Cr(Cr(VI))	BL	/	
		Br(PBBs&PBDEs)	BL	/	
		DIBP	/	N.D.	
		DEHP	/	N.D.	
		BBP	/	N.D.	
		DBP	/	N.D.	
89	Red wire jacket	Pb	BL	/	Pass
		Cd	BL	/	
		Hg	BL	/	
		Cr(Cr(VI))	BL	/	
		Br(PBBs&PBDEs)	BL	/	
		DIBP	/	N.D.	
		DEHP	/	N.D.	
		BBP	/	N.D.	
		DBP	/	N.D.	
90	Black wire jacket	Pb	BL	/	Pass
		Cd	BL	/	
		Hg	BL	/	
		Cr(Cr(VI))	BL	/	
		Br(PBBs&PBDEs)	BL	/	
		DIBP	/	N.D.	
		DEHP	/	N.D.	
		BBP	/	N.D.	
		DBP	/	N.D.	
91	Core of wire	Pb	BL	/	Pass
		Cd	BL	/	
		Hg	BL	/	
		Cr(Cr(VI))	BL	/	
		Br(PBBs&PBDEs)	/	/	
		DIBP	/	/	
		DEHP	/	/	
		BBP	/	/	
		DBP	/	/	

92	Transparent plastic	Pb	BL	/	Pass
		Cd	BL	/	
		Hg	BL	/	
		Cr(Cr(VI))	BL	/	
		Br(PBBs&PBDEs)	BL	/	
		DIBP	/	N.D.	
		DEHP	/	N.D.	
		BBP	/	N.D.	
DBP	/	N.D.			

6.Battery

93	Yellow adhesive tape	Pb	BL	/	Pass
		Cd	BL	/	
		Hg	BL	/	
		Cr(Cr(VI))	BL	/	
		Br(PBBs&PBDEs)	BL	/	
		DIBP	/	N.D.	
		DEHP	/	N.D.	
		BBP	/	N.D.	
DBP	/	N.D.			
94	Beige tape	Pb	BL	/	Pass
		Cd	BL	/	
		Hg	BL	/	
		Cr(Cr(VI))	BL	/	
		Br(PBBs&PBDEs)	BL	/	
		DIBP	/	N.D.	
		DEHP	/	N.D.	
		BBP	/	N.D.	
DBP	/	N.D.			
95	Battery PCB	Pb	BL	/	Pass
		Cd	BL	/	
		Hg	BL	/	
		Cr(Cr(VI))	BL	/	
		Br(PBBs&PBDEs)	IN	N.D.	
		DIBP	/	N.D.	
		DEHP	/	N.D.	
		BBP	/	N.D.	
DBP	/	N.D.			

96	Solder	Pb	BL	/	Pass
		Cd	BL	/	
		Hg	BL	/	
		Cr(Cr(VI))	BL	/	
		Br(PBBs&PBDEs)	/	/	
		DIBP	/	/	
		DEHP	/	/	
		BBP	/	/	
		DBP	/	/	
97	IC 1	Pb	BL	/	Pass
		Cd	BL	/	
		Hg	BL	/	
		Cr(Cr(VI))	BL	/	
		Br(PBBs&PBDEs)	BL	/	
		DIBP	/	N.D.	
		DEHP	/	N.D.	
		BBP	/	N.D.	
		DBP	/	N.D.	
98	Blue colloid	Pb	BL	/	Pass
		Cd	BL	/	
		Hg	BL	/	
		Cr(Cr(VI))	BL	/	
		Br(PBBs&PBDEs)	BL	/	
		DIBP	/	N.D.	
		DEHP	/	N.D.	
		BBP	/	N.D.	
		DBP	/	N.D.	
99	SMD resistor	Pb	BL	/	Pass
		Cd	BL	/	
		Hg	BL	/	
		Cr(Cr(VI))	BL	/	
		Br(PBBs&PBDEs)	BL	/	
		DIBP	/	N.D.	
		DEHP	/	N.D.	
		BBP	/	N.D.	
		DBP	/	N.D.	

100	SMD capacitor	Pb	BL	/	Pass
		Cd	BL	/	
		Hg	BL	/	
		Cr(Cr(VI))	BL	/	
		Br(PBBs&PBDEs)	BL	/	
		DIBP	/	N.D.	
		DEHP	/	N.D.	
		BBP	/	N.D.	
		DBP	/	N.D.	
101	Red wire jacket	Pb	BL	/	Pass
		Cd	BL	/	
		Hg	BL	/	
		Cr(Cr(VI))	BL	/	
		Br(PBBs&PBDEs)	BL	/	
		DIBP	/	N.D.	
		DEHP	/	N.D.	
		BBP	/	N.D.	
		DBP	/	N.D.	
102	Black wire jacket	Pb	BL	/	Pass
		Cd	BL	/	
		Hg	BL	/	
		Cr(Cr(VI))	BL	/	
		Br(PBBs&PBDEs)	BL	/	
		DIBP	/	N.D.	
		DEHP	/	N.D.	
		BBP	/	N.D.	
		DBP	/	N.D.	
103	Core of wire	Pb	BL	/	Pass
		Cd	BL	/	
		Hg	BL	/	
		Cr(Cr(VI))	BL	/	
		Br(PBBs&PBDEs)	/	/	
		DIBP	/	/	
		DEHP	/	/	
		BBP	/	/	
		DBP	/	/	

104	Silvery metallic film	Pb	BL	/	Pass
		Cd	BL	/	
		Hg	BL	/	
		Cr(Cr(VI))	BL	/	
		Br(PBBs&PBDEs)	/	/	
		DIBP	/	/	
		DEHP	/	/	
		BBP	/	/	
DBP	/	/			

- Note:
1. N.D. = Not Detected (<MDL) MDL = Method Detection Limit
mg/kg = ppm = 0.0001% / = Not Regulated or Not Applicable
 2. BL = Under the XRF screening limit
IN = Further chemical test will be conducted when the screening result inconclusive
OL = Further chemical test will be conducted while the result is above the screening limit.
 3. For metal samples, the sample is negative for Cr(VI), if the Cr(VI) concentration is less than 0.10 $\mu\text{g}/\text{cm}^2$, the coating is considered a non-Cr(VI) based coating;
The sample is positive for Cr(VI), if the Cr(VI) concentration is greater than 0.13 $\mu\text{g}/\text{cm}^2$,
The sample coating is considered to contain Cr(VI);
The result is considered to be inconclusive, the Cr(VI) concentration is between the 0.10 $\mu\text{g}/\text{cm}^2$ and 0.13 $\mu\text{g}/\text{cm}^2$, Unavoidable coating variations may influence the determination.
Because the storage condition and production date of the sample are not known, the test results of the sample of hexavalent chromium can only represent the state of hexavalent chromium in the samples tested.
- Remark:
1. The screening results are only used for reference.
 2. When conducting the test for PBBs&PBDEs, XRF was introduced to screen Br Exclusively; When conducting the test for Hexavalent Chromium, XRF was introduced to screen Chromium exclusively.
 4. Part No.55,56 Resubmitted Date: 20121-04-16

Test Method:

when screening results exceed the XRF screening limit in IEC62321-3-1: 2013, further use of chemical methods are required to test the Lead(Pb), Cadmium(Cd), Mercury(Hg), Hexavalent Chromium(Cr(VI)), Polybrominated Biphenyls(PBBs) and Polybrominated Diphenyl Ethers(PBDEs)

1. XRF screening limits in mg/kg for regulated elements according to IEC 62321-3-1:2013

Element	Limit of IEC 62321-3-1:2013 (mg/kg)		
	Polymers	Metals	Composite material
Pb	$BL \leq (700-3\sigma) < X$ $< (1300+3\sigma) \leq OL$	$BL \leq (700-3\sigma) < X$ $< (1300+3\sigma) \leq OL$	$BL \leq (500-3\sigma) < X$ $< (1500+3\sigma) \leq OL$
Cd	$BL \leq (70-3\sigma) < X <$ $(130+3\sigma) \leq OL$	$BL \leq (70-3\sigma) < X <$ $(130+3\sigma) \leq OL$	$LOD < X < (150+3\sigma)$ $\leq OL$
Hg	$BL \leq (700-3\sigma) < X$ $< (1300+3\sigma) \leq OL$	$BL \leq (700-3\sigma) < X$ $< (1300+3\sigma) \leq OL$	$BL \leq (500-3\sigma) < X$ $< (1500+3\sigma) \leq OL$
Cr	$BL \leq (700-3\sigma) < X$	$BL \leq (700-3\sigma) < X$	$BL \leq (500-3\sigma) < X$
Br	$BL \leq (300-3\sigma) < X$	/	$BL \leq (250-3\sigma) < X$

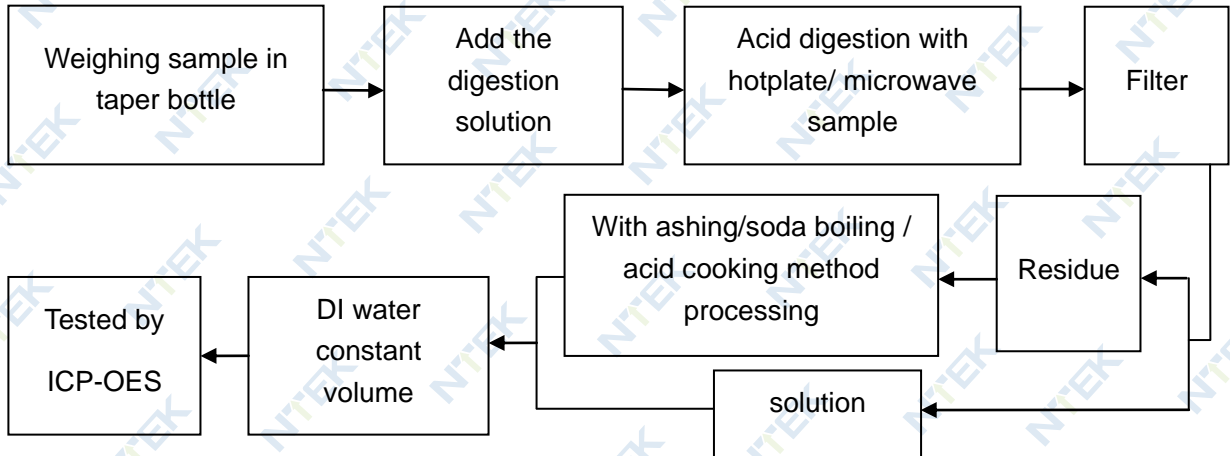
Note: BL=Under the XRF screening limit OL=Over the XRF screening limit
 X=The symbol "X" marks the region where further investigation is necessary.
 3σ =The reproducibility of analytical instruments LOD= Detection limit

2. Chemical Test

Test item	Test method	Test instrument	MDL	Limit
Lead (Pb)	IEC 62321-5:2013 Ed.1.0	ICP-OES	10 mg/kg	1000 mg/kg
Cadmium (Cd)	IEC 62321-5:2013 Ed.1.0	ICP-OES	10 mg/kg	100 mg/kg
Mercury (Hg)	IEC 62321-4:2013+AMD1:2017	ICP-OES	10 mg/kg	1000 mg/kg
Hexavalent Chromium(Cr(VI))	IEC62321-7-1:2015 Ed.1.0	UV-Vis	$0.10 \mu\text{g}/\text{cm}^2$	1000 mg/kg
	IEC 62321-7-2:2017 Ed.1.0		10 mg/kg	
Polybrominated Biphenyls(PBBs)	IEC 62321-6:2015 Ed.1.0	GC-MS	100 mg/kg	1000 mg/kg
Polybrominated, Diphenyl Ethers(PBDEs)	IEC 62321-6:2015 Ed.1.0	GC-MS	100 mg/kg	1000 mg/kg
Bis-(2-ethylhexyl) Phthalate (DEHP)	IEC 62321-8:2017 Ed.1.0	GC-MS	50 mg/kg	1000 mg/kg
Benzyl butyl Phthalate (BBP)	IEC 62321-8:2017 Ed.1.0	GC-MS	50 mg/kg	1000 mg/kg
Dibutyl Phthalate (DBP)	IEC 62321-8:2017 Ed.1.0	GC-MS	50 mg/kg	1000 mg/kg
Diisobutyl Phthalate(DIBP)	IEC 62321-8:2017 Ed.1.0	GC-MS	50 mg/kg	1000 mg/kg

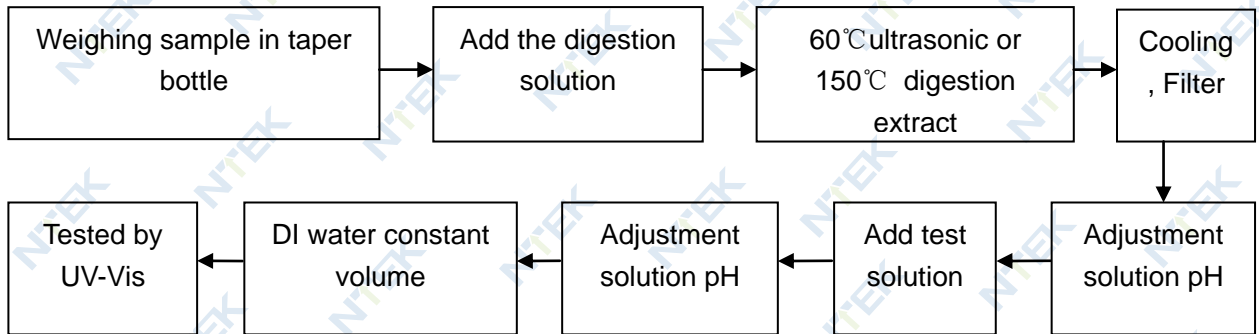
Test Flow:

1. Lead(Pb), Cadmium(Cd) , Mercury (Hg)

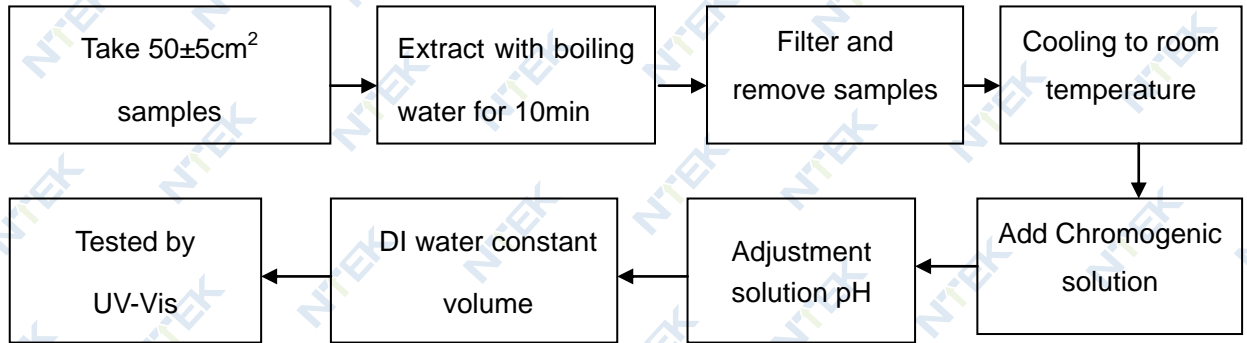


2. Hexavalent Chromium(Cr(VI))

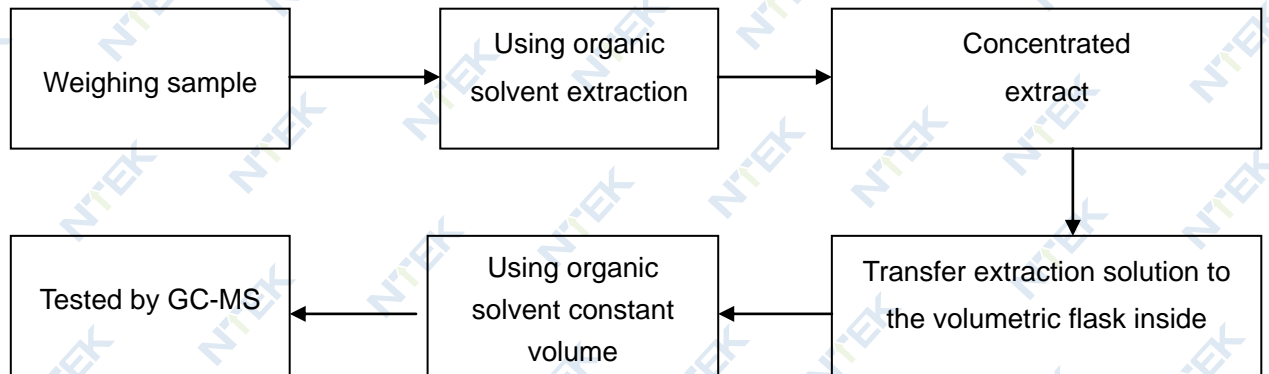
2.1 Non- metal sample(s)



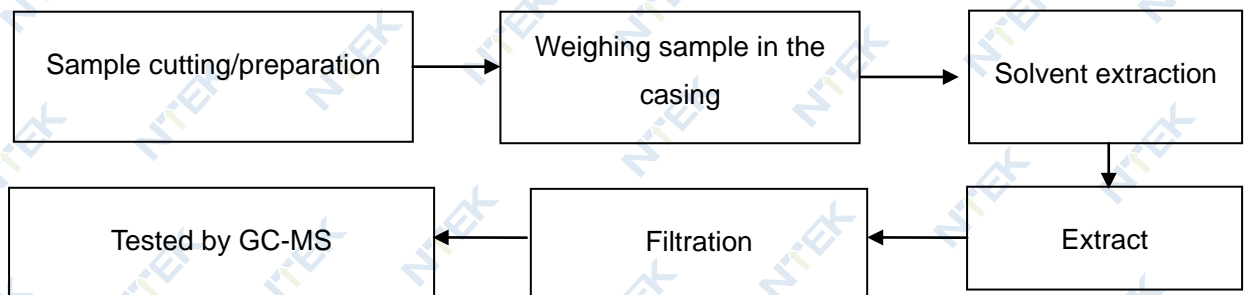
2.2 Metal sample(s)



3. PBBs/ PBDEs



4. Phthalates



Sample photo(s):



Fig.1



Fig.2



Fig.3



Fig.4

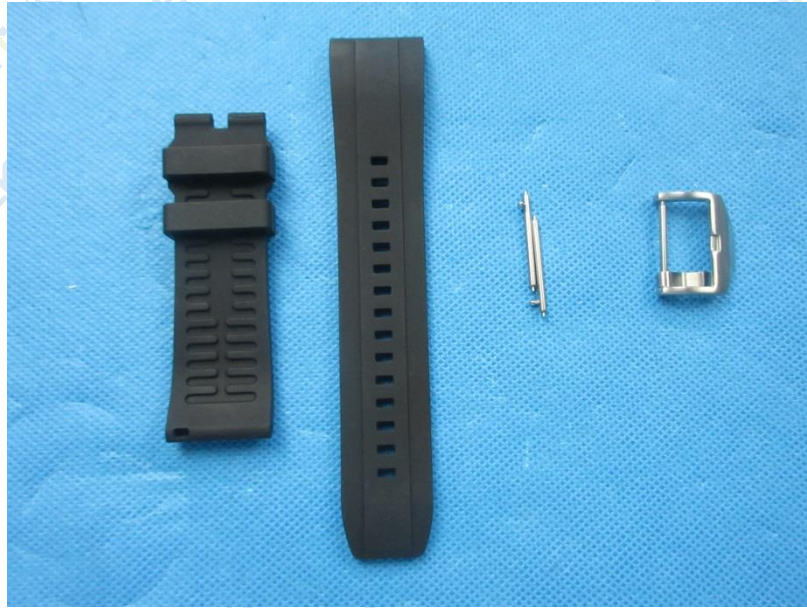


Fig.5



Fig.6

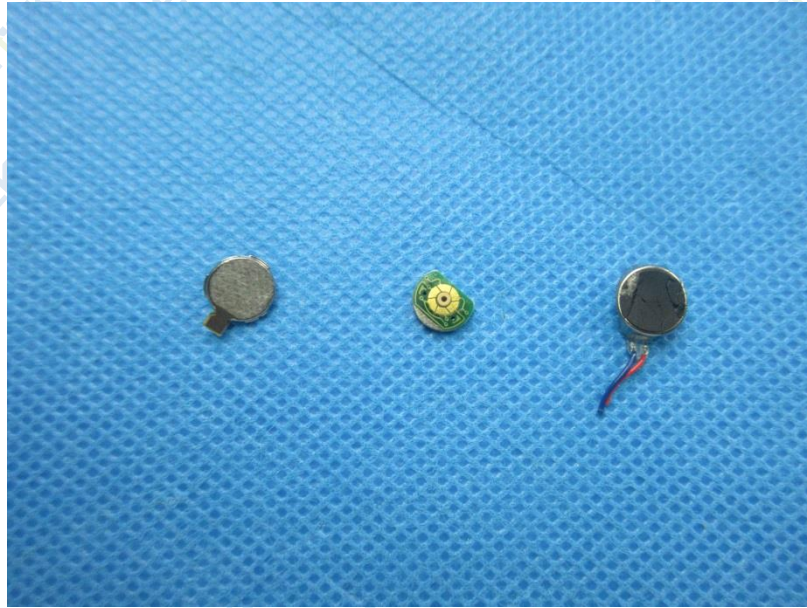


Fig.7

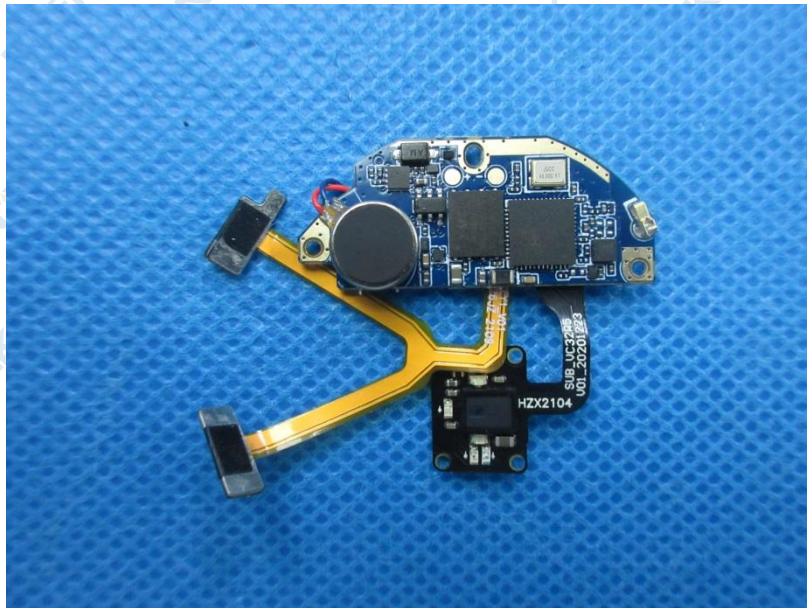


Fig.8

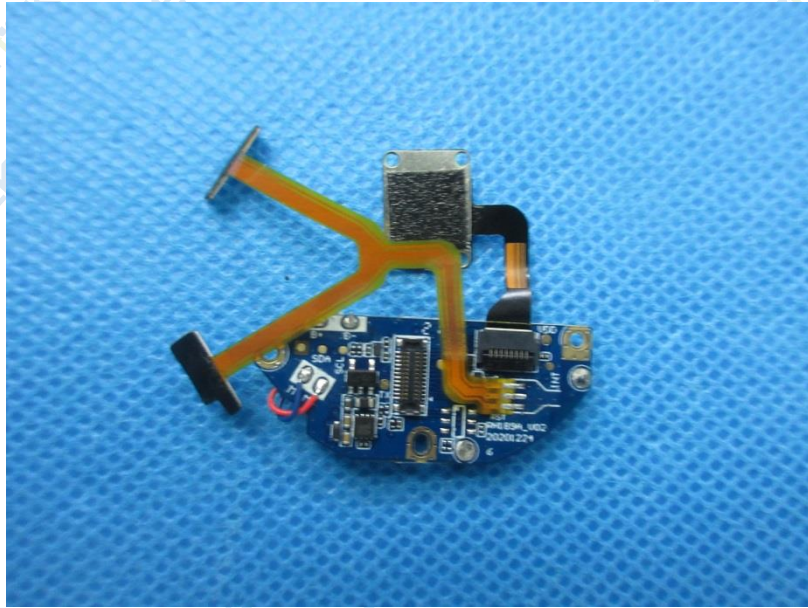


Fig.9

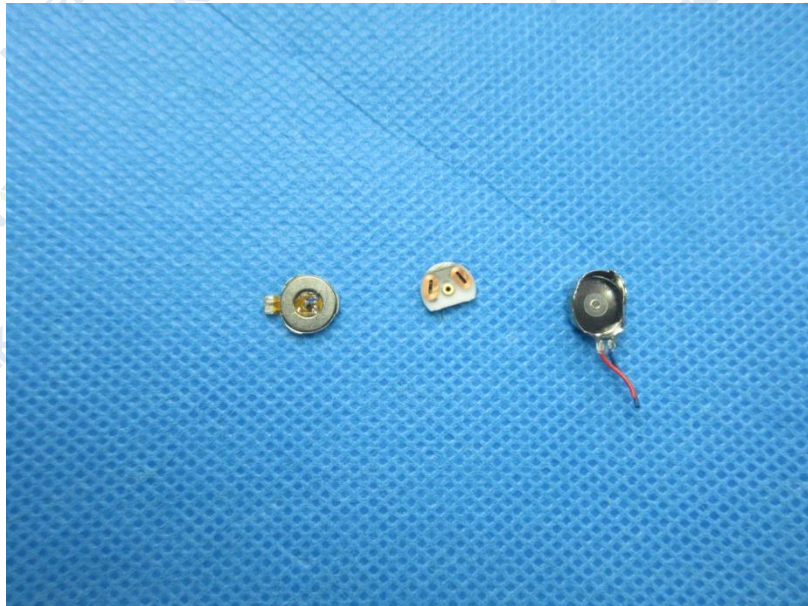


Fig.10



Fig.11



Fig.12



Fig.13



Fig.14



Fig.15

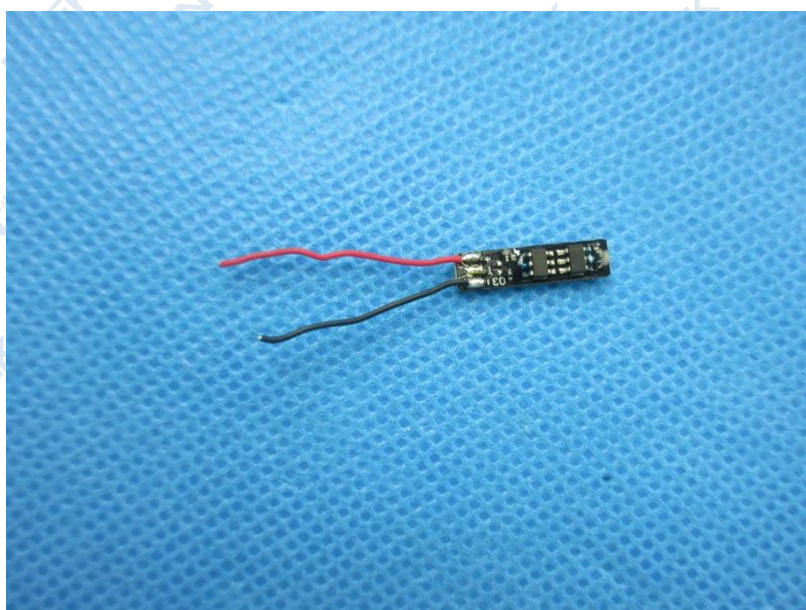


Fig.16

****End of Report****

The test report is effective only with both signature and specialized stamp, the result(s) shown in this report refer only to the sample(s) tested. Without written approval of NTEK, this report can't be reproduced except in full.